





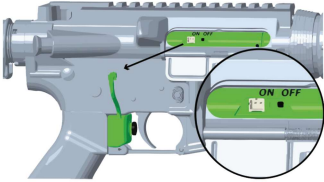


Laser	Status	Adjustment Screw	Direction of rotation
	Laser points too low	b	clockwise
	Laser points too high	b	counter clockwise
	Laser points too far to the right	a	clockwise
	Laser points too far to the left	a	counter clockwise
	Laser is misaligned diagonally (points too high and too far to the right).	a & b	a counter clockwise b counter clockwise
	No adjustment needed, laser appears as one clear spot.		

VI. FLASH BOLT REMOVAL

12



Switch the Flash Bolt to "OFF". Unplug cable from the bolt. Remove side plate of trigger switch and then remove the switch.

13



Separate the lower and upper receiver of your firearm. Gently pull the charging handle carefully and remove the Flash bolt from upper receiver.

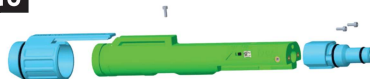
VII. CALIBER CONVERSION

14



To change between the 9mm and .223/5.56 options, use Hex wrench to remove the two laser tip screws. Choose desired caliber/tip and resecure the screws.

15

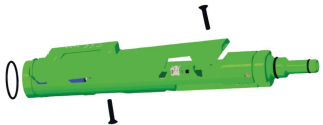


To install .308/7.62x51, Remove the O-ring from backside of the bolt. Replace the rear cap with the .308 cap and screw the retaining screw into the bolt fin. Replace the tip with the .308 tip as demonstrated in diagram #14.

Tip: Laser Ammo offers additional adapters that are sold separately. Follow the above instructions to install the additional adapters.

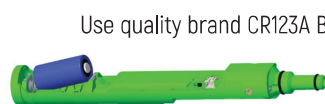
VIII. REPLACE BATTERY

16



Remove both main body screws with the provided hex wrench. Remove O-ring. Open main body by removing its upper part.

17



Use quality brand CR123A Battery

Replace battery and close main body. BE SURE TO INSERT BATTERY CORRECTLY (Positive towards laser tip). Install both main body screws and tighten gently. Reinstall O-ring.

Attention! Inserting the battery in wrong direction will harm the electronic!



Quickstart Guide

FLASH BOLT



laser class 1
DIN EN
6082-51:2015-07



www.laserammo.com / Support@laserammo.com

Limited Warranty: No liability is expressed or implied for damage or injury as a result of installation or use of this product. Laser Ammo offers 1 year limited warranty to the replacement or repair of the original product only.

I. SET-UP

1



Remove original bolt carrier group from your AR. Guide the Flash Bolt into your receiver, laser tip forward.

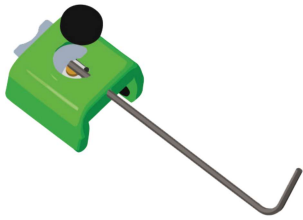
2



Gently push your Flash Bolt into the receiver until it seats.

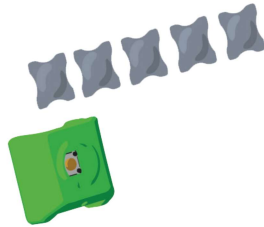
II. TRIGGER WEIGHT

3



Remove trigger weight springs from the trigger switch by pushing the springs out with the provided hex wrench.

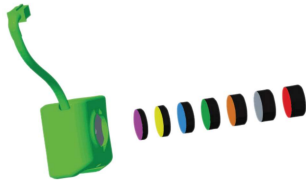
4



Insert desired number of springs into the trigger switch to set trigger pull weight. Max weight is 5 springs.

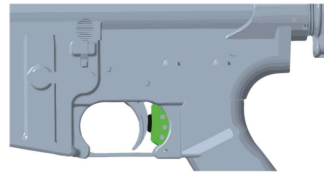
III. TRIGGER SPACER PLATES

5



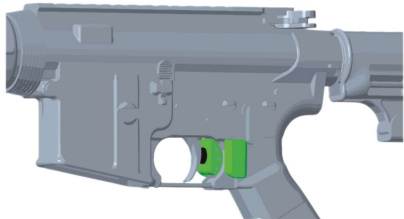
Numerous colored spacer plates are supplied to fill the gap between the trigger switch and the back of the trigger. Choose the correct spacer plate before installing trigger switch behind your trigger of your rifle.

6



Spacer plates come in various thickness and must sit snug against the back of the trigger. Choose the one that fill the gap the best and slide the trigger switch in to place behind the trigger.

7



Secure the trigger switch with the magnetic trigger switch side plate.

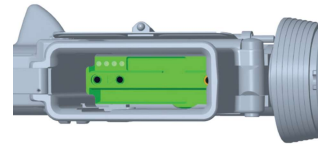
8



Connect the trigger switch cable with the Flash Bolt and switch main switch to "ON".

IV. LASER MODES

9



Push buttons to cycle through the desired laser modes as shown in diagram.

Red Laser

Mode	Name	Description
1	Invisible	Extra short Invisible to the eye laser pulse for more professional training. To be used with Laser Ammo electronic targets only (Will not work on Simulator).
2	Dry fire	Short pulse that will activate the Smokeless Range® simulator and all Laser Ammo targets. For professional /competition shooters.
3	Extra Duration	A longer pulse to compensate on the shooter movements when shooting. Activates all Laser Ammo targets and Simulator and allows to train on a paper target and check your flinching.
4	Boresight	For aligning the laser and training on tracking with your rifle.

IR Laser

Mode	Name	Description
1	Dry fire	Short pulse that will activate the Smokeless Range® simulator and all Laser Ammo targets. For professional /competition shooters.
2	Extra Duration	A longer pulse to compensate on the shooter movements when shooting. Activate all Laser Ammo targets and Simulator.

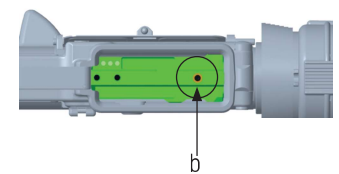
V. LASER ADJUSTMENTS

10



When test firing, you can adjust the horizontal axis of the shot (with the provided hex wrench) adjustment screw "A" on the Flash Bolt. Only continue adjustment in one quarter turn increments at the time!

11



Next adjust vertical axis as needed with provided hex wrench turning screw "B" on the Flash Bolt. Again, only adjust by using quarter turns. Never tighten the adjustment screws!

TIP: When using IR, test fire the bolt with the Smokeless Range Simulator or one of Laser Ammo reactive targets.